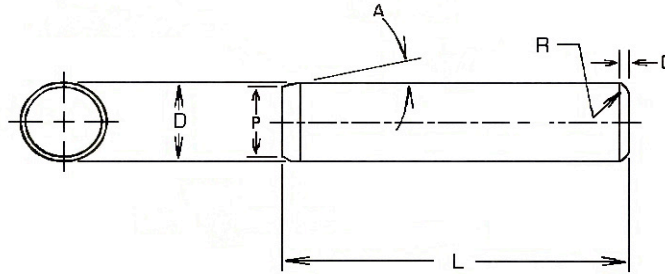


Metric Dowel Pins



Nominal Diameter	Diameter D				P		R	C	L _T Point Angle Transition Length
	Standard Pin Max.	Standard Pin Min.	OverSize Pin Max.	OverSize Pin Min.	Point Diameter Max.	Point Diameter Min.	Crown Radius Min.	Crown Height Max.	
3	3.008	3.003	3.030	3.025	2.9	2.6	0.3	0.8	8
4	4.008	4.003	4.030	4.025	3.9	3.6	0.4	0.9	10
5	5.008	5.003	5.030	5.025	4.9	4.6	0.4	1.0	10
6	6.009	6.003	6.031	6.025	5.8	5.4	0.4	1.1	12
8	8.009	8.003	8.031	8.025	7.8	7.4	0.5	1.3	12
10	10.009	10.003	10.031	10.025	9.8	9.4	0.6	1.4	16
12	12.009	12.003	12.031	12.025	11.8	11.4	0.6	1.6	20
16	16.009	16.003	16.031	16.025	15.8	15.3	0.8	1.8	20
20	20.009	20.003	20.031	20.025	19.8	19.3	0.8	2.0	25
25	25.009	25.003	25.031	25.025	24.8	24.3	1.0	2.3	25

Mechanical Properties

Nominal Diameter	Single Shear Strength kN	Double Shear Strength kN	Recommended Hole Size		Min. Case Depth
			Standard Pins Max.	Standard Pins Min.	
3	7.4	14.8	3.000	2.987	0.25
4	13.2	26.4	4.000	3.987	0.25
5	20.6	41.2	5.000	4.987	0.38
6	29.7	59.4	6.000	5.987	0.38
8	52.5	105	8.000	7.987	0.38
10	82.5	165	10.000	9.987	0.38
12	119	238	12.000	11.987	0.38
16	211	422	16.000	15.987	0.38
20	330	660	20.000	19.987	0.38
25	515	1030	25.000	24.987	0.38

Applicable Standard: ASME B18.8.5M

Alloy Steel; Core Hardness Rc 47-58

Case Hardness Rc 60 min.

Note: Angle A is 4-8° for lengths L_T and longer and 10-16° for lengths shorter than L_T.